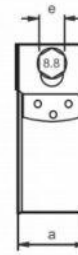
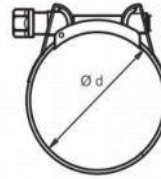


**Hose Clamps Heavy Duty**

STAINLESS  
STEEL



Part No.	Ø	e	a		Hose ref.
HDC2527	25-27	8	18	50	P19/E19/G19
HDC3437	34-37	11	20	50	G25
HDC4751	47-51	11	20	50	G38

Material: Stainless Steel.

**Flexible Hose Clip Screwdriver**



Part No.	A/F
SD01	7

Flexible screwdriver for hose clips.  
7 mm A/F.

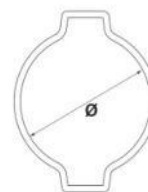
**Side Pincer**



Part No.	Side Pincer	Front Pincer	
PS01	*	*	1

Suitable for Ear Clamps.  
Can be used either front or side access.

**Two-ear Clip**



Part No.	Ø - ID	L		HOSE Ref
EAR15	13-15	7	100	S10/V10
EAR17	14-17	7	100	P10/N10
EAR18	15-18	7,5	100	E10/G10
EAR20	17-20	7,5	100	S13/V13/P13/N13
EAR23	20-23	8,5	100	E13/G13
EAR27	23-27	8,5	100	P19
EAR28	25-28	9	100	E19/G19

Two-ear clips are an economical solution for simple hose assemblies.  
The two ears give the clip extra grip and help to maintain constant pressure around the hose.  
Two-ear clips offer great versatility in simple hose assemblies.  
Material: St 34 steel : Finish Silver-white Cr3 Zinc-Plated.