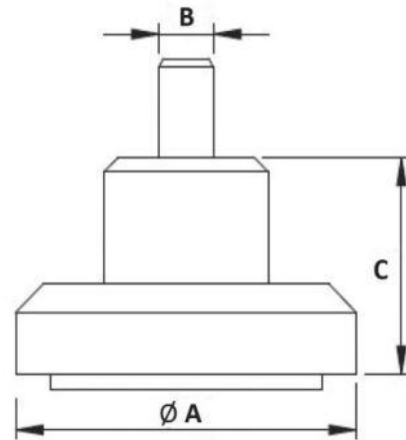


**CPP. – Cylinder Pressure Plate**



Part No.	A	B	C	REF	Weight (g)
CPP.20.03	20	M3	14	$\varnothing 12$	5
CPP.25.04	25	M4	15	$\varnothing 16$	10
CPP.30.05	30	M5	18	$\varnothing 20$	17
CPP.40.08	40	M8	20	$\varnothing 32$	46
CPP.40.18	40	G1/8	20		40

Material: Aluminium.  
Surface: Silver anodized.