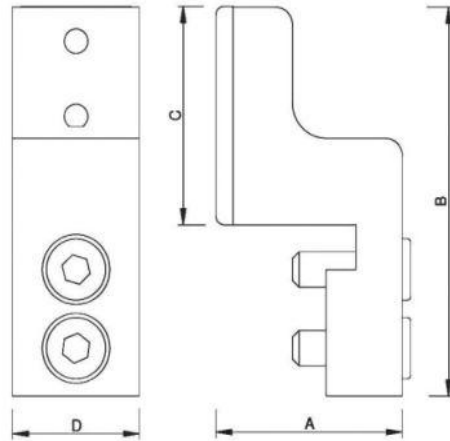


PARALLEL FINGER GRIPPERS

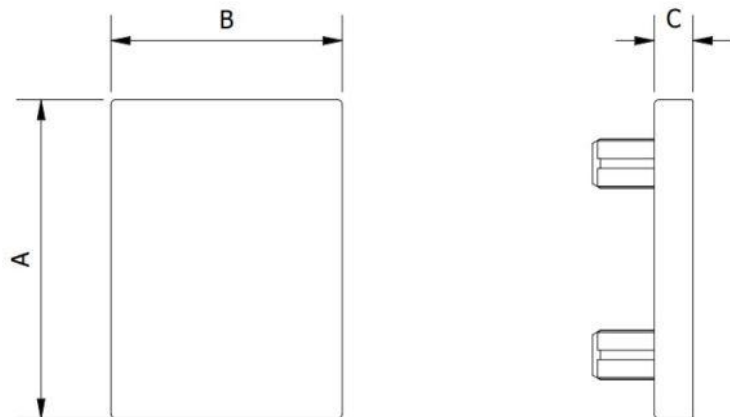
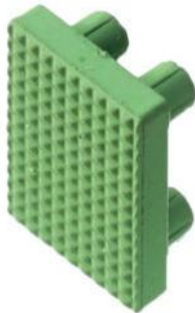
MA.KB. – Jaws for Parallel Gripper PG (complete)



Part No.	Insert	A	B	C	D	Gripper Ref.	Weight (g)
MA.KB.10	FKM-10	15,5	27	14	10	PG-10	14
MA.KB.16	FKM-16	18,5	35	20	15	PG-16	28
MA.KB.20	FKM-20	22	44,5	25	15	PG-20	41
MA.KB.25	FKM-25	29	55	25	20	PG-25	73
MA.KB.32	FKM-32	36	65,5	36,5	25	PG-32	166

Extremely leight weight (Material Aluminium).

FKM – Insert Pad Viton



Part No.	Colour	A	B	C	Jaw Ref.	Weight (g)
FKM-10	■	14	10	2,5	PG-10	1
FKM-16	■	20	15	2,5	PG-16	2
FKM-20	■	25	13	2	PG-20	1
FKM-25	■	25	13	2	PG-25	1
FKM-32	■	30	20	3	PG-32	3

FKM = Viton (flur=oroelastomer).