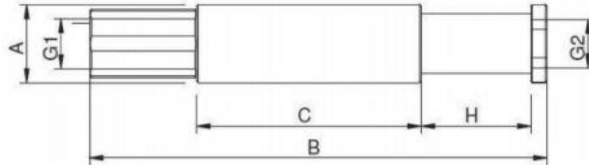


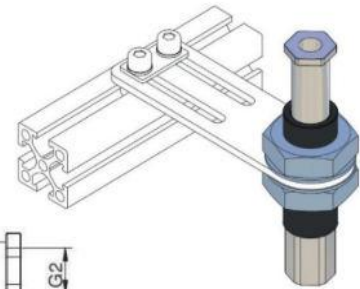
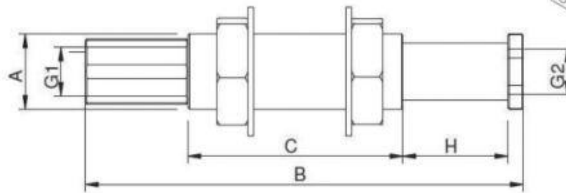
**MP.SDR. – Telescopic Suspension Smooth Body (Rotative)**



Part No.	A	B	C	G1	G2	H	F(N)	Weight (g)
MP.SDR.1010	10	51	20	M5	M5	10	3,6	7
MP.SDR.1025	10	86	40	M5	M5	25	3,7	11
MP.SDR.1420	14	85	42	G1/8	G1/8	20	8,9	19
MP.SDR.1435	14	120	62	G1/8	G1/8	35	9,5	26
MP.SDR.2025	20	97	47	G1/8	G1/8	25	11	56
MP.SDR.2050	20	147	72	G1/8	M10	50	11,4	76
MP.SDR.2025.14	20	107	47	G1/4	G1/4	25	11	54
MP.SDR.2050.14	20	157	72	G1/4	G1/4	50	11,4	74

Body and rod made of aluminium - anodized.

**MP.SDRG. – Telescopic Suspension Threaded Body (Rotative)**



Part No.	A	B	C	G1	G2	H	F(N)	Weight (g)
MP.SDRG.1010	M10x1	51	20	M5	M5	10	3,6	12
MP.SDRG.1025	M10x1	86	40	M5	M5	25	3,7	16
MP.SDRG.1420	M14x1.5	85	42	G1/8	G1/8	20	8,9	30
MP.SDRG.1435	M14x1.5	120	62	G1/8	G1/8	35	9,5	37
MP.SDRG.1620	M16x1	85	42	G1/8	G1/8	20	8,9	37
MP.SDRG.2025	M20x1.5	97	47	G1/8	G1/8	25	11	88
MP.SDRG.2050	M20x1.5	147	72	G1/8	G1/8	50	11,4	108

Body and rod made of aluminium - anodized.