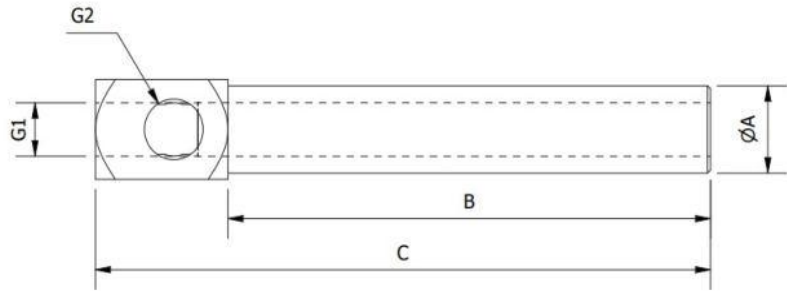


RIGID VACUUM CUP MOUNTS

VGA. – Gripper Arm for Vacuum Cups



| Part No. | A | B | C | G1 | G2 | Weight (g) |
|----------------|----|-----|-----|------|------|------------|
| VGA.10030.0505 | 10 | 30 | 46 | M5 | M5 | 9 |
| VGA.10060.0505 | 10 | 60 | 76 | M5 | M5 | 15 |
| VGA.10090.0505 | 10 | 90 | 106 | M5 | M5 | 24 |
| VGA.10030.1805 | 10 | 30 | 52 | G1/8 | M5 | 15 |
| VGA.10060.1805 | 10 | 60 | 82 | G1/8 | M5 | 18 |
| VGA.10090.1805 | 10 | 90 | 112 | G1/8 | M5 | 25 |
| VGA.14040.1818 | 14 | 40 | 62 | G1/8 | G1/8 | 18 |
| VGA.14080.1818 | 14 | 80 | 102 | G1/8 | G1/8 | 30 |
| VGA.14120.1818 | 14 | 120 | 142 | G1/8 | G1/8 | 43 |
| VGA.20050.1418 | 20 | 50 | 73 | G1/4 | G1/8 | 44 |
| VGA.20100.1418 | 20 | 100 | 123 | G1/4 | G1/8 | 63 |
| VGA.20150.1418 | 20 | 150 | 173 | G1/4 | G1/8 | 78 |

To optimise position of a vacuum cup.
Side vacuum port.