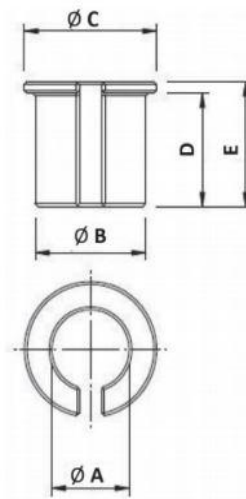


CLAMPS - TUBE TO TUBE

RID. – Reducer



| Part No. | A | B | C | D | E | Weight (g) |
|----------|----|----|----|----|----|------------|
| RID.1410 | 10 | 14 | 18 | 14 | 16 | 4 |
| RID.2014 | 14 | 20 | 24 | 20 | 22 | 9 |
| RID.3020 | 20 | 30 | 30 | 30 | 30 | 30 |

Enables the use of smaller diameter shafts in a larger clamp.