

# END OF ARM TOOLING

## 06.

**165** QUICK CHANGE SYSTEM



**173** PROFILE & CHANNEL NUTS



**176** PROFILE CONNECTORS



**184** CLAMPS



**193** GRIPPER ARMS



**199** VACUUM CUP MOUNTS



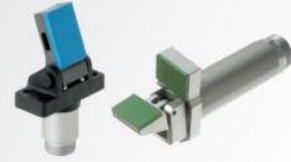
**215** VACUUM CUPS



**223** SPRUE GRIPPERS



**238** FINGER GRIPPERS



**248** GENERAL PURPOSE GRIPPERS



**249** SPECIALITY GRIPPERS



**254** NIPPERS



**266** CYLINDERS & SLIDES



**272** FITTINGS, TUBE & MANIFOLDS



**279** ELECTRONICS & SENSORS

