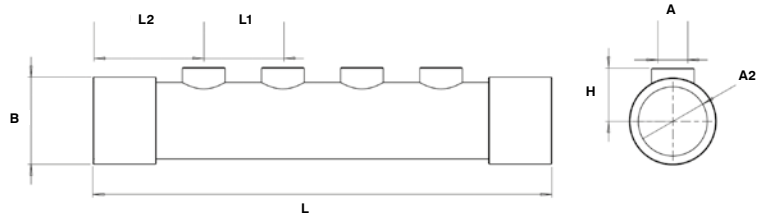


**Heavy Duty Inline Stainless Steel Manifold**



Part No.	Ports	A (BSPP)	A2 (BSPP)	L	L1	L2	B	H
SSIM6-4-1/2	4	1/2"	1.1/2"	290	50	69,5	55	34
SSIM6-8-1/2	8	1/2"	1.1/2"	490	50	69,5	55	34
SSIM6-12-1/2	12	1/2"	1.1/2"	690	50	69,5	55	34

Welded pipe construction  
 Stainless Steel AISI 304  
 Perfect for aggressive water and oil

Max. pressure 10 bar.  
 Max temp. 200°C.

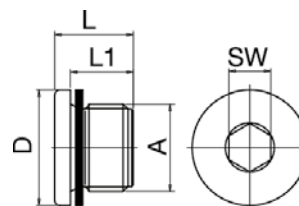
**Brackets for heavy duty Stainless Steel Manifolds**



Part No.	Size	
SS-6-Bracket	1.1/2"	1

Electro plated steel bracket for installation of a single manifold  
 2 Brackets needed for correct installation

**Blanking Plugs**



Part No.	A	D	L	L1	SW	
DR1-1/2*	G1-1/2" BSP	55	22,5	16	24	1

Material: Plated Brass  
 With O-ring