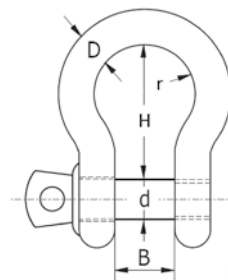


SHACKLES

Alloy Steel Bow Shackles - Galvanised



| Part No. | Dim | B | d | H | r | WLL | |
|----------|-----------------|------|------|-------|------|---------|---|
| ASBSG11 | 3/8" x 7/16" | 17mm | 11mm | 37mm | 26mm | 1000kg | 1 |
| ASBSG13 | 7/16" x 1/2" | 18mm | 13mm | 43mm | 29mm | 1500kg | 1 |
| ASBSG16 | 1/2" x 5/8" | 21mm | 16mm | 48mm | 33mm | 2000kg | 1 |
| ASBSG19 | 5/8" x 3/4" | 27mm | 19mm | 60mm | 43mm | 3250kg | 1 |
| ASBSG22 | 3/4" x 7/8" | 32mm | 22mm | 71mm | 51mm | 4750kg | 1 |
| ASBSG25 | 7/8" x 1" | 37mm | 25mm | 84mm | 58mm | 6500kg | 1 |
| ASBSG28 | 1" x 1 1/8" | 43mm | 28mm | 95mm | 68mm | 8500kg | 1 |
| ASBSG32 | 1 1/8" x 1 1/4" | 46mm | 32mm | 104mm | 75mm | 9500kg | 1 |
| ASBSG35 | 1 1/4" x 1 3/8" | 52mm | 36mm | 119mm | 82mm | 12000kg | 1 |

Mouldpro bow type shackle is a high quality shackle intended for use in demanding environments.

It is supplied with a screw pin for quick and easy opening.

Material: Forged alloy steel, supplied with alloy screw pin.

Marking: According to standard, CE-marked, WLL, size and grade

Temperature range: -20°C up to +200°C.

Finish: All parts hot dip galvanised. Bolt additional powder painted.

Standard: EN 13889.

Safety factor: 6:1.

Grade: 6.