

# PNEUMATIC GRIPPERS

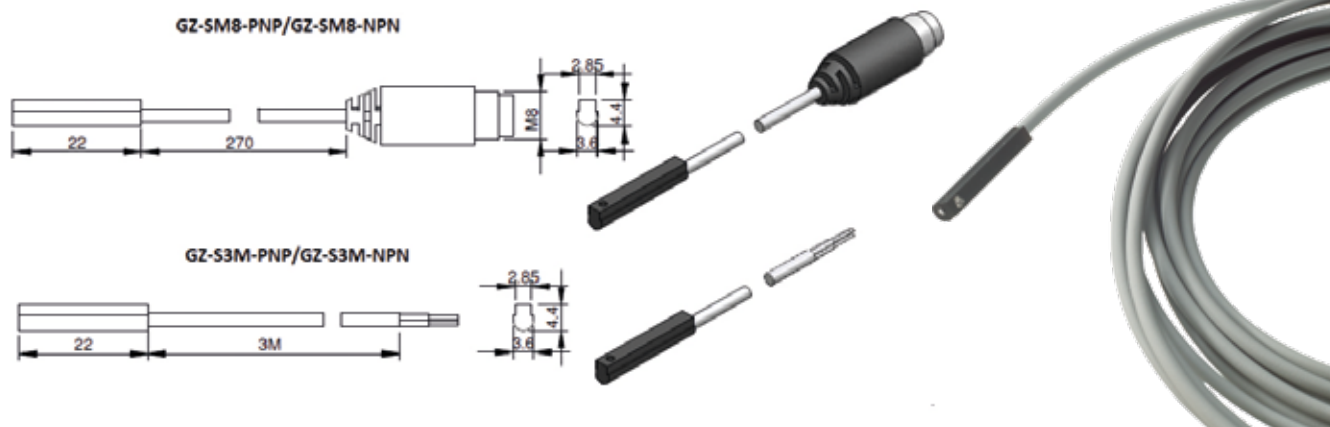
## Jaw Rubber Pads



Part No.	Type	Fit Gripper Model	Colour
GZ-TPU-4	TPU	GZ12-10-8-G	Black
GZ-VIT-4	FKM	GZ12-10-8-G	Green
GZ-TPU-6	TPU	GZ12-10-10-G	Black
GZ-VIT-6	FKM	GZ12-10-10-G	Green

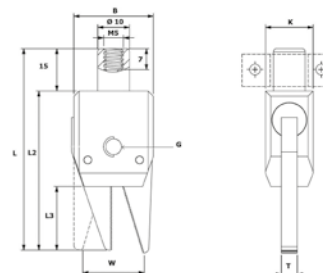
TPU = Thermoplastic Polyurethane.  
FKM = VITON (Fluoroelastomer).

## Sensors



Part No.	Type	Cable length	Connection
GZ-5M8-PNP	PNP	270	M8
GZ-S3M-PNP	PNP	3000	-

## Sprue Gripper



Part No.	W	T	L3	L2	G	L	K	Grip Force	B
MSG30	6,0	3	12	30	M4	45	8	10 N	15
MSG40	9,4	4	16	40	M6	55	10	15 N	20
MSG50	14,0	5	20	50	M6	66	12	23 N	25
MSG60	16,3	6	24	60	M6	76	14	31 N	30

Compressed air supply: max. 6 bar.  
Temperature range: +5°C to +70°C.