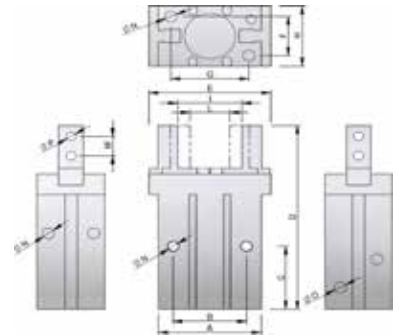
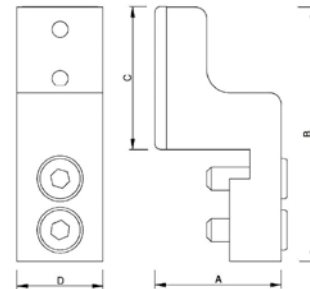


Parallel Gripper



Part No.	Bore size	A	B	C	D	E	F	G	H	I open	L closed	Stroke	M	N	O	P	Force (N) Open/Close	Weight
PG-10	10	23	16	23	57	29	12	18	16.4	16,5	11	4	5.7	M3	M3	M2.5	22 / 34	55 g
PG-10L	10	23	16	25	57	35	12	18	16.4	20,3	11	8	5.7	M3	M3	M2.5	22 / 34	60 g
PG-16	16	30.6	24	24.5	67.3	38	15	22	23.6	22	14.5	6	7	M4	M5	M3	68 / 90	135 g
PG-16L	16	30.6	24	31	70	47	15	22	23.6	28	14.7	12	7	M4	M5	M3	68 / 90	135 g
PG-20	20	42	30	29	84.8	50	18	32	27.6	27.5	16	10	9	M5	M5	M4	84 / 132	235 g
PG-20L	20	42	30	36	90	62	18	32	27.6	35.5	16.1	18	9	M5	M5	M4	84 / 132	270 g
PG-25	25	52	36	30	102.7	63	22	40	33.6	33,3	19	14	12	M6	M5	M5	130 / 208	430 g
PG-25L	25	52	36	40	106	75	22	40	33.6	42.6	19.3	22	12	M6	M5	M5	130 / 208	470 g
PG-32	32	60	46	40	113	97	26	46	40	46.75	26	22	14	M6	M5	M6	316 / 386	715 g
PG-40	40	72	56	49	139	119	32	56	48	61.35	30	30	17	M8	M5	M8	508 / 636	1275 g

Jaws for Gripper



Part No.	Insert	A	B	C	D	Gripper Ref.	Weight
MA.KB.10	TPU/FKM-10	15.5	27	14	10	PG-10	14 g
MA.KB.16	TPU/FKM-16	18.5	35	20	15	PG-16	28 g
MA.KB.20	TPU/FKM-20	22	44.5	25	15	PG-20	41 g
MA.KB.25	TPU/FKM-25	29	55	25	20	PG-25	73 g
MA.KB.32	-	36	65,5	36,5	25	PG-32	166 g

Extremely leight weight (Material Aluminium).