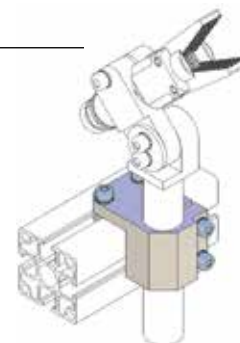
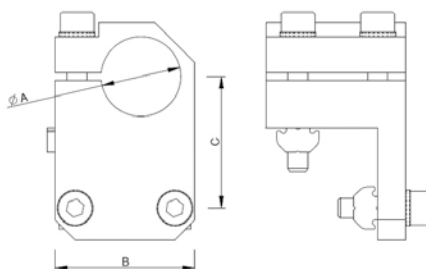


MOUNTING CLAMPS

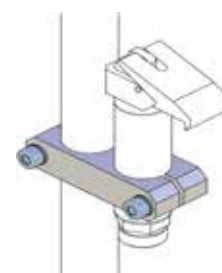
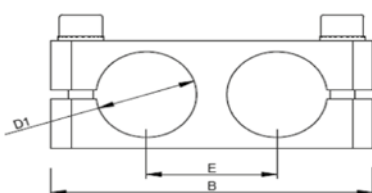
Angle Clamp



Part No.	A	B	C	Weight
CA.10.X	10	25	19,5	57 g
CA.14.X	14	25	21,5	60 g
CA.20.X	20	32	24,5	80 g
CA.20.JU	20	35	33	105 g
CA.30.JU	30	45	39	178 g

Material: Aluminium.
Surface silver anodized.

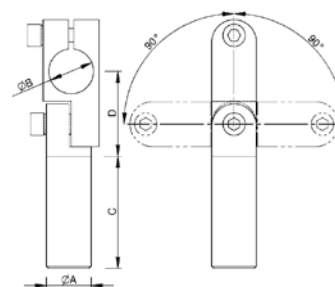
Parallel Clamp



Part No.	D1	B	E	Weight
CA.1010.15	10	38	15	12 g
CA.1414.20	14	52	20	27 g
CA.2020.26	20	64	26	47 g
CA.3030.38	30	88	38	104 g

Material: Aluminium.
Surface silver anodized.

Elbow Gripper Arm - Adjustable



Part No.	A	B	C	D
MA.GLA.1010.90	10	10	90	22
MA.GLA.1414.120	14	14	120	30
MA.GLA.2020.150	20	20	150	38