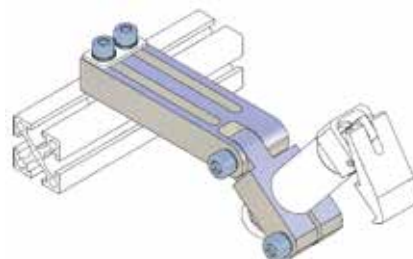
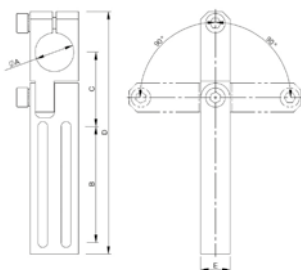


MOUNTING CLAMPS

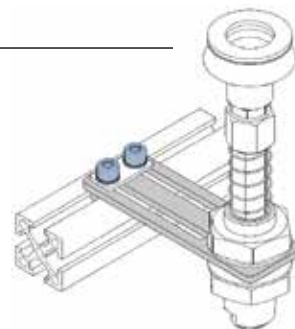
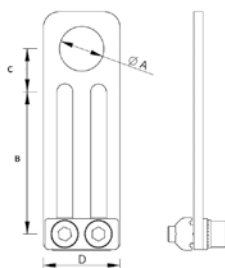
Long Angle Clamp - Swivel Head



Part No.	A	B	C	D	E	Reference	Weight
LA.GA.10.X	10	40	26,6	85,3	10	APX25..	57 g
LA.GA.14.X	14	40	27,8	88,3	10	APX25..	57 g
LA.GA.20.X	20	60	38,5	125,5	15	APX25../APL40..	122 g
LA.GA.30.X	30	82	53	168,5	20	APL40..	266 g

Material: Aluminium.
Surface silver anodized.

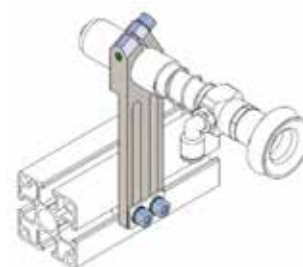
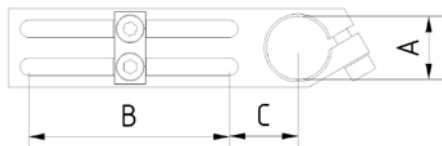
Mounting Bracket



Part No.	A	B	C	D	Weight
MB.04.20.10.X	10	40	11	20	35 g
MB.04.20.14.X	14	46	14	25	45 g

Material: Aluminium.
Surface silver anodized.

Adjustable Clamp



Part No.	A	B	C	Profile
AC10-40-X	10	40	24	X
AC14-40-X	14	40	19	X
AC20-60-X	20	60	22	X
AC20-70-L	20	70	25	L
AC30-70-L	30	70	27	L

- Adjustable clamp - strong version.
- The clamping of components.
- The device can be mounted in very close range.
- Perfect accessibility of individual screws.