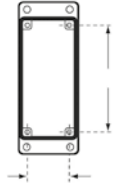
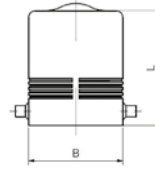
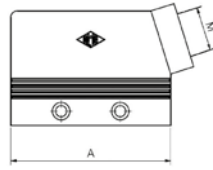
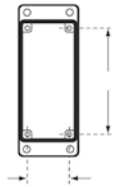
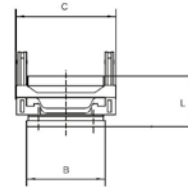
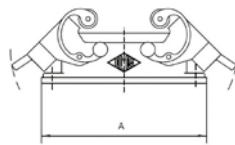


**Side Entry Hood, Double Lever**



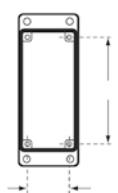
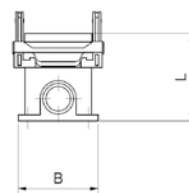
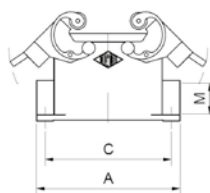
| Part No. | # Poles | Levers | A    | B    | L  | M   | Size   |
|----------|---------|--------|------|------|----|-----|--------|
| MHO10.20 | 10 Pole | Double | 73   | 43   | 52 | M20 | 57.27  |
| MHO16.25 | 16 Pole | Double | 93,5 | 43   | 63 | M25 | 77.27  |
| MHO24.32 | 24 Pole | Double | 120  | 43   | 63 | M32 | 104.27 |
| MHO32.32 | 32 Pole | Double | 93,5 | 82,5 | 94 | M32 | 77.62  |

**Panel Mount Base, Double Lever**



| Part No. | # Poles | Levers | A     | B    | C    | L  | Size   |
|----------|---------|--------|-------|------|------|----|--------|
| CHI10    | 10 Pole | Double | 95,5  | 45,5 | 58   | 29 | 57.27  |
| CHI16    | 16 Pole | Double | 115,5 | 45,5 | 58   | 29 | 77.27  |
| CHI24    | 24 Pole | Double | 142,5 | 45,5 | 58   | 29 | 104.27 |
| CHI32    | 32 Pole | Double | 126   | 45,5 | 98,5 | 35 | 77.62  |

**Surface Mount Base, Double Lever**



| Part No. | # Poles | Levers | A    | B  | C   | L  | M   | Size   |
|----------|---------|--------|------|----|-----|----|-----|--------|
| MHP10.20 | 10 Pole | Double | 93,5 | 52 | 82  | 57 | M20 | 57.27  |
| MHP16.25 | 16 Pole | Double | 117  | 57 | 105 | 63 | M25 | 77.27  |
| MHP24.25 | 24 Pole | Double | 144  | 57 | 132 | 63 | M25 | 104.27 |
| MHP32.40 | 32 Pole | Double | 125  | 84 | 112 | 90 | M40 | 77.62  |