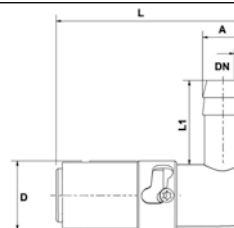


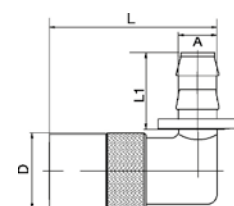
INTERNATIONAL SERIES

Safety Coupling, Type TS, 90°



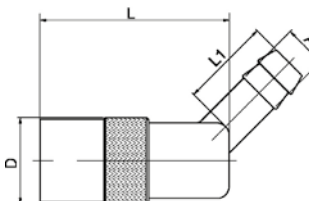
DN	Series	↙	↔	A	D	L	L1	
6	20	20K10V/90-TS	20K10/90-TS	10	18	52,5	22	5
7	30	30K10V/90-TS	30K10/90-TS	10	23	68,5	25	5
9		30K13V/90-TS	30K13/90-TS	13	23	68,5	25	5
15	50	50K19V/90-TS	50K19/90-TS	19	32	80,8	34	1

Push Lock - 90° Coupling



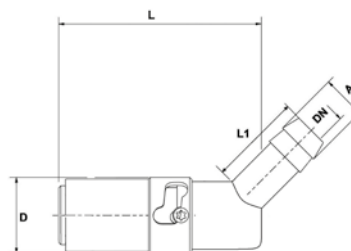
DN	Series	↙	↔	A	D	L	L1	
6	20	20K10V-90-PL	20K10-90-PL	10	18	40,5	28	10
7	30	30K10V-90-PL	30K10-90-PL	10	23	61,5	28	10
9		30K13V-90-PL	30K13-90-PL	13	23	61,5	28	10

45° Coupling



DN	Series	↙	↔	A	D	L	L1	
4,5	20	20K6V/45	20K6/45	6	18	55,5	19	10
6		20K10V/45	20K10/45	10	18	55,5	22	10
7	30	30K10V/45	30K10/45	10	24	71	22	10
9		30K13V/45	30K13/45	13	24	75	25	10
15	50	50K19V/45	50K19/45	19	32	77	30	5

Safety Coupling, Type TS, 45°



DN	Series	↙	↔	A	D	L	L1	
6	20	20K10V/45-TS	20K10/45-TS	10	18	52,5	22	5
7	30	30K10V/45-TS	30K10/45-TS	10	23	68,5	25	5
9		30K13V/45-TS	30K13/45-TS	13	23	68,5	25	5
15	50	50K19V/45-TS	50K19/45-TS	19	32	80,8	34	1



See explanation of symbols on page 268