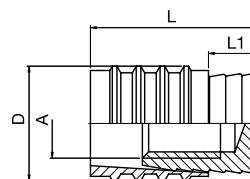
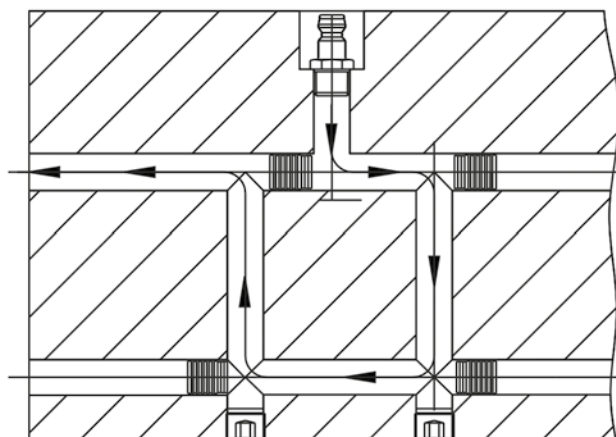


FITTINGS

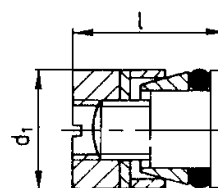
Channel Plug



| Part No. | A | D | L | L1 | |
|----------|----|----|------|-----|----|
| S6 | M3 | 6 | 11,5 | 3,5 | 25 |
| S8 | M4 | 8 | 11,5 | 3,5 | 25 |
| S10-1 | M6 | 10 | 14 | 4 | 25 |
| S12 | M6 | 12 | 14 | 4 | 25 |
| S16 | M8 | 16 | 16 | 4 | 25 |



Channel Plug



| Part No. | d1 | Length | |
|----------|----|--------|----|
| KN105-6 | 6 | 10 | 10 |
| KN105-8 | 8 | 11 | 10 |
| KN105-10 | 10 | 11 | 10 |
| KN105-12 | 12 | 11 | 10 |
| KN105-14 | 14 | 13 | 10 |
| KN105-16 | 16 | 13 | 10 |

Material: Brass.
O-ring FKM.