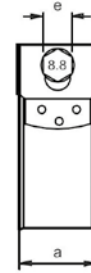
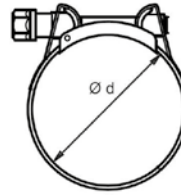


HOSE CLAMPING

Hose Clamps Heavy Duty

STAINLESS
STEEL



Part No.	Ø	e	a		Hose ref.
HDC2527	25-27	8	18	50	P19/E19/G19
HDC3437	34-37	11	20	50	G25
HDC4751	47-51	11	20	50	G38

Material: Stainless Steel.

Flexible Hose Clip Screwdriver



Part No.	A/F
SD01	7

Flexible screwdriver for hose clips.
7 mm A/F.

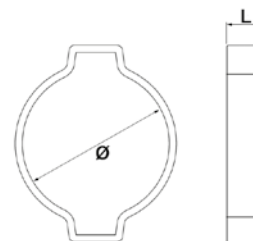
Side Pincer



Part No.	Side Pincer	Front Pincer	
PS01	•	•	1

Suitable for Ear Clamps.
Can be used either front or side access.

Two-ear Clip



Part No.	Ø - ID	L		HOSE Ref
EAR15	13-15	7	100	S10/V10
EAR17	14-17	7	100	P10/N10
EAR18	15-18	7,5	100	E10/G10
EAR20	17-20	7,5	100	S13/V13/P13/N13
EAR23	20-23	8,5	100	E13/G13
EAR27	23-27	8,5	100	P19
EAR28	25-28	9	100	E19/G19

Two-ear clips are an economical solution for simple hose assemblies.
The two ears give the clip extra grip and help to maintain constant pressure around the hose.
Two-ear clips offer great versatility in simple hose assemblies.
Material: St 34 steel : Finish Silver-white Cr3 Zinc-Plated.