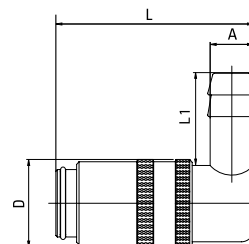


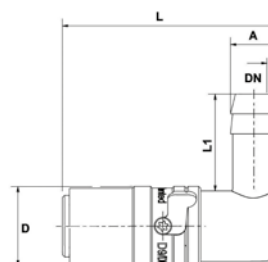
## EUROPEAN SERIES

### 90° Coupling



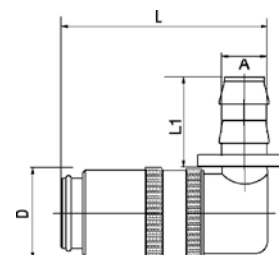
DN	Series	↙↘	↔	A	D	L	L1	
6	09	09K10V-90	09K10-90	10	18	41	22	10
7	13	13K10V-90	13K10-90	10	23	51	28,5	10
9		13K13V-90	13K13-90	13	23	51	28,5	10
13	19	19K19V-90	19K19-90	19	32	78	32	5

### SAFETY COUPLING, TYPE TS, 90°



DN	Serie	↙↘	↔	A	D	L	L1	
6	09	09K10V/90-TS	09K10/90-TS	10	18	52,5	22	5
9	13	13K13V/90-TS	13K13/90-TS	13	23	68,5	25	5
13	19	19K19V/90-TS	19K19/90-TS	19	32	81	34	1

### Push Lock - 90° Coupling



DN	Series	↙↘	↔	A	D	L	L1	
6	09	09K10V-90-PL	09K10-90-PL	10	18	42,5	28	10
9	13	13K13V-90-PL	13K13-90-PL	13	23	51	28	10

See explanation of symbols on page 268