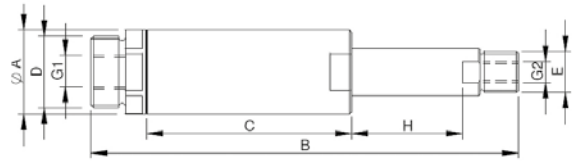


VACUUM CUP ADAPTORS

Telescopic Self-Retracting Suspension

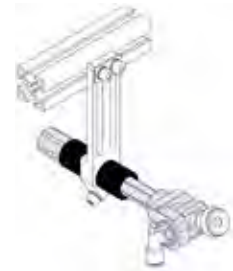
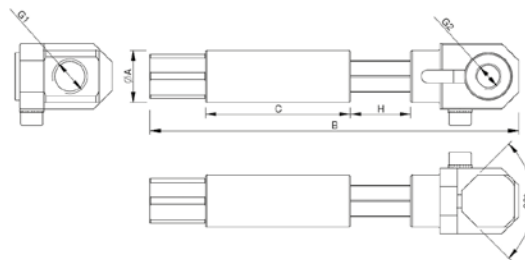


| Part No. | A | B | C | D | E | G1 | G2 | H | F(N) | Weight |
|-----------|----|-----|----|-------|-------|-------|----|----|------|--------|
| MPTSS2025 | 20 | 100 | 48 | M17x1 | G 1/8 | G 1/8 | M5 | 25 | 3.6 | 42 g |
| MPTSS2050 | 20 | 150 | 73 | M17x1 | G 1/8 | G 1/8 | M5 | 50 | 4.2 | 68 g |

Extremely light weight (Material Aluminium).
 Guide (Tube and shaft) hard coated.
 Sealing with no seals.
 Only for vacuum applications.

When the cup takes a part, the vacuum on the internal piston overtakes the spring force and moves the rod up.
 The speed of the retraction movement can be adjusted by a standard throttle valve.
 When the vacuum is removed the part is released and the internal spring resets the rod.
 Pressure range: -1 ÷ 0 bar.

Smooth Body Non-Rotative Telescopic Suspension



| Part No. | A | B | C | G1 | G2 | H | F(N) | Weight |
|---------------|----|-------|------|-------|-------|----|------|--------|
| MPSSN10100505 | 10 | 56 | 21 | M5 | M5 | 10 | 3.6 | 19 g |
| MPSSN10250505 | 10 | 90.5 | 40.5 | M5 | M5 | 25 | 3.7 | 22 g |
| MPSSN14201818 | 14 | 98.5 | 38.5 | G 1/8 | G 1/8 | 20 | 8.9 | 45 g |
| MPSSN14351818 | 14 | 148 | 60 | G 1/8 | G 1/8 | 35 | 9.5 | 51 g |
| MPSSN20251418 | 20 | 110 | 49 | G 1/4 | G 1/8 | 25 | 11 | 105 g |
| MPSSN20501418 | 20 | 167.5 | 81.5 | G 1/4 | G 1/8 | 50 | 11.4 | 110 g |

H= Spring deflection.
 Material: Aluminium /Brass .

