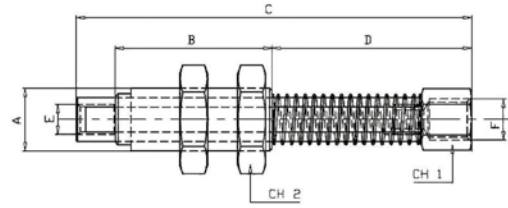


VACUUM CUP ADAPTORS

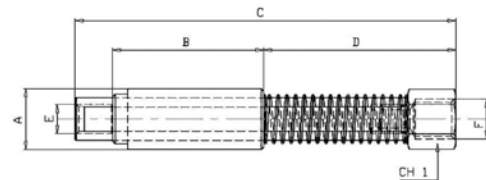
Spring Loaded Level Compensator - Non Rotational - Threaded Body



Part No.	A	B	C	D	E	F	CH1	CH2	Stroke Hub (mm)
LC.M10.20	M10x1.25	26	71	42	M5	M5	13	14	20
LC.M12.20	M12x1.25	26	61	32	M5	1/8"	10	17	20
LC.M14.38	M14x1.5	30	94	61	M5	1/8"	13	19	38
LC.M20.48	M20x1.5	50	126	73	1/8"	1/4"	17	27	48

Spring: Steel.
 Sliding Parts: Chrome-plated Brass.
 Terminal Parts: Anodized Aluminium.

Spring Loaded Level Compensator - Non Rotational - Smooth Body



Part No.	A	B	C	D	E	F	CH1	Stroke Hub (mm)
LC.10.20	ø10	26	71	42	M5	M5	13	20
LC.12.20	ø12	26	71	42	M5	M5	13	20
LC.14.38	ø14	30	94	61	M5	1/8"	13	38
LC.20.48	ø20	50	126	73	1/8"	1/4"	17	48

Spring: Steel.
 Sliding Parts: Chrome-plated Brass.
 Terminal Parts: Anodized Aluminium.