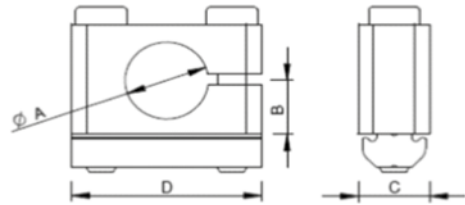


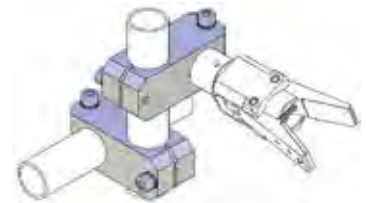
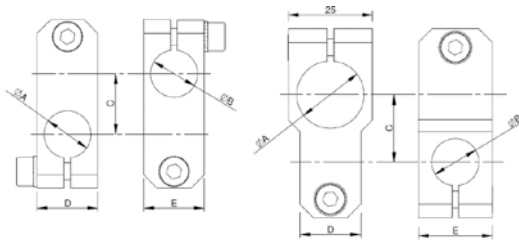
Round Clamp



Part No.	A	B	C	D
RC10	10	8	12	15
RC14	14	10	12	32
RC20	20	13	12	40
RC30	30	18	20	52

- Very robust and accurately fitting construction.
- The inside threads are formed.
- All edges are rounded.

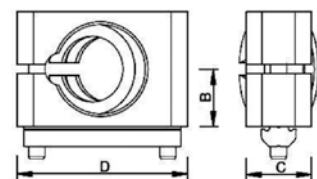
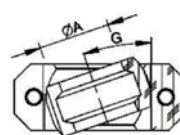
Cross Connector



Part No.	A	B	C	D	E	Weight
CCT.10.10	10	10	16	14	14	17 g
CCT.14.14	14	14	18	18	18	35 g
CCT.20.20	20	20	26	25	25	71 g
CCT.20.10	20	10	20	14	20	41 g
CCT.20.14	20	14	20	18	22	48 g

Material: Aluminium.
Surface silver anodized.

Cross Connector with Ball Joint



Part No.	A	B	C	D	G	Profile
MP.KVB.KG.X10	10	10	12	32	0-13°	X
MP.KVB.KG.X14	14	12,5	15	40	0-17°	X
MP.KVB.KG.L20	20	17,5	20	52	0-19°	L