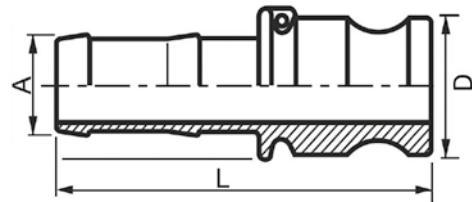


Gaskets for Camlock Couplers



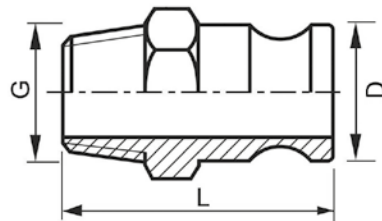
Part No. NBR	Part No. Viton	Size	Dimension (mm)
G3/4 NBR	G3/4 FKM	3/4"	35 x 22 x 5.5
G1NBR	G1FKM	1"	40 x 27 x 6.4
G1-1/4NBR	G1-1/4FKM	1-1/4"	50 x 35 x 6.4
G1-1/2NBR	G1-1/2FKM	1-1/2"	56 x 41 x 6.4
G2NBR	G2FKM	2"	67 x 51 x 6.4
G2-1/2NBR	G2-1/2FKM	2-1/2"	80 x 64 x 6.4
G3NBR	G3FKM	3"	95 x 76 x 6.4

Hosetail Plug Type E



Part No.	Size	A	D	L	Max pressure
MPC-HP3/4	75	3/4" 19 mm.	32,1	86	17 bar
MPC-HP1	100	1" 25 mm.	36,7	103	17 bar
MPC-HP1-1/4	125	1.1/4" 32 mm.	45,5	107	17 bar
MPC-HP1-1/2	150	1.1/2" 38 mm.	53,4	114	17 bar
MPC-HP2	200	2" 50 mm.	63,1	131	17 Bar
MPC-HP2-1/2	250	2.1/2" 64 mm.	75,8	142	10 bar
MPC-HP3	300	3" 75 mm.	91,5	168	8 bar

Male Threaded Plug Type F



Part No.	Size	G	D	L	Max pressure
MPC-MP3/4	75	3/4"	32,1	55	17 bar
MPC-MP1	100	1"	36,7	67	17 bar
MPC-MP1-1/4	125	1.1/4"	45,5	74	17 bar
MPC-MP1-1/2	150	1.1/2"	53,4	76	17 bar
MPC-MP2	200	2"	63,1	87	17 Bar
MPC-MP2-1/2	250	2.1/2"	75,8	97	10 bar
MPC-MP3	300	3"	91,5	100	8 bar