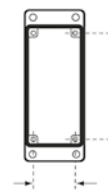
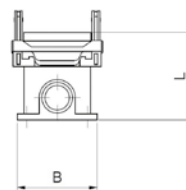
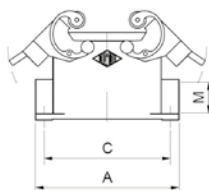


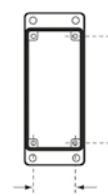
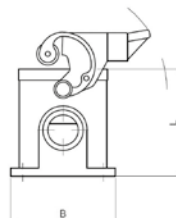
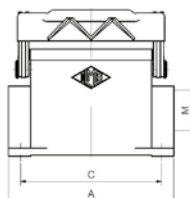
CONNECTORS

Surface Mount Base, Double Lever



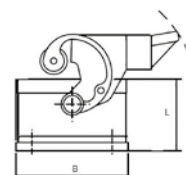
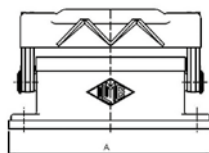
Part No.	# Poles	Levers	A	B	C	L	M	Size
MHP32.40	32 Pole	Double	125	84	112	90	M40	77.62

Surface Mount Base, Single Lever and Cover



Part No.	# Poles	Levers	A	B	C	L	M	Size
MHP48LS40	48 Pole	Single	141	120	111	99	M40	104.62

Panel Mount Base



Part No.	# Poles	Levers	A	B	L	Size
CHI32	32 Pole	Double	126	92	35	77.62
CHI48L	48 Pole	Single	167,5	93	42	104.62

Cable Glands



Part No.	Thread
AGM20T	M20
AGM25T	M25
AGM32T	M32