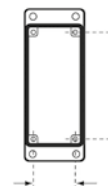
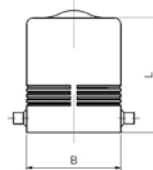
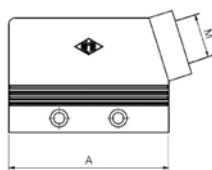


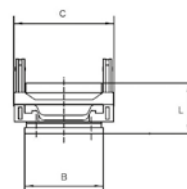
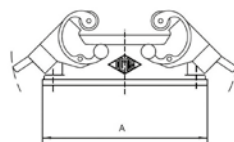
CONNECTORS

Side Entry Hood, Double Lever



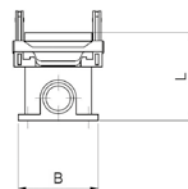
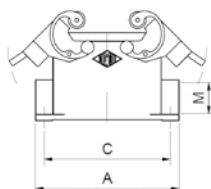
| Part No. | # Poles | Levers | A | B | L | M | Size |
|----------|---------|--------|------|----|----|-----|--------|
| MHO10.20 | 10 Pole | Double | 73 | 43 | 52 | M20 | 57.27 |
| MHO16.25 | 16 Pole | Double | 93,5 | 43 | 63 | M25 | 77.27 |
| MHO24.32 | 24 Pole | Double | 120 | 43 | 63 | M32 | 104.27 |

Panel Mount Base, Double Lever



| Part No. | # Poles | Levers | A | B | C | L | Size |
|----------|---------|--------|-------|------|----|----|--------|
| CHI10 | 10 Pole | Double | 95,5 | 45,5 | 58 | 29 | 57.27 |
| CHI16 | 16 Pole | Double | 115,5 | 45,5 | 58 | 29 | 77.27 |
| CHI24 | 24 Pole | Double | 142,5 | 45,5 | 58 | 29 | 104.27 |

Surface Mount Base, Double Lever



| Part No. | # Poles | Levers | A | B | C | L | M | Size |
|----------|---------|--------|------|----|-----|----|-----|--------|
| MHP10.20 | 10 Pole | Double | 93,5 | 52 | 82 | 57 | M20 | 57.27 |
| MHP16.25 | 16 Pole | Double | 117 | 57 | 105 | 63 | M25 | 77.27 |
| MHP24.25 | 24 Pole | Double | 144 | 57 | 132 | 63 | M25 | 104.27 |