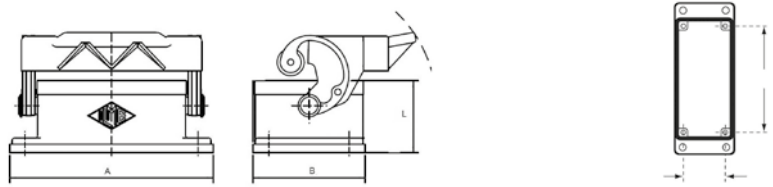
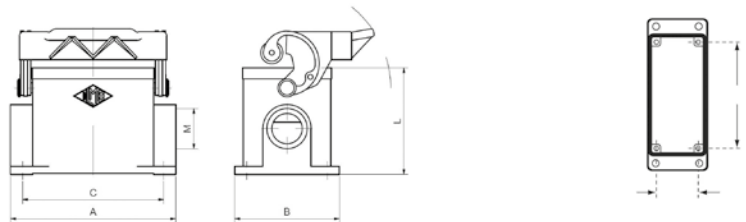


**Panel Mount Base, Single Lever**



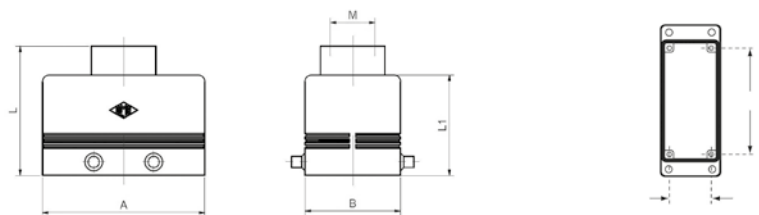
| Part No. | # Poles | Levers | A     | B    | L  | Size   |
|----------|---------|--------|-------|------|----|--------|
| CHI06L   | 6 Pole  | Single | 82,5  | 45,5 | 29 | 44.27  |
| CHI10L   | 10 Pole | Single | 95,5  | 45,5 | 29 | 57.27  |
| CHI16L   | 16 Pole | Single | 115,5 | 45,5 | 29 | 77.27  |
| CHI24L   | 24 Pole | Single | 142,5 | 45,5 | 29 | 104.27 |

**Surface Mount Base, Single Lever**



| Part No. | # Poles | Levers | A    | B  | C   | L  | M   | Size   |
|----------|---------|--------|------|----|-----|----|-----|--------|
| MHP06L20 | 6 Pole  | Single | 82   | 52 | 70  | 53 | M20 | 44.27  |
| MHP10L20 | 10 Pole | Single | 93,5 | 52 | 82  | 57 | M20 | 57.27  |
| MHP16L25 | 16 Pole | Single | 117  | 57 | 105 | 63 | M25 | 77.27  |
| MHP24L25 | 24 Pole | Single | 144  | 57 | 132 | 63 | M25 | 104.27 |

**Top Entry Hood, Double Lever**



| Part No. | # Poles | Levers | A    | B  | L  | L1 | M   | Size   |
|----------|---------|--------|------|----|----|----|-----|--------|
| MHV10.20 | 10 Pole | Double | 73   | 43 | 58 | 45 | M20 | 57.27  |
| MHV16.25 | 16 Pole | Double | 93,5 | 43 | 58 | 45 | M25 | 77.27  |
| MHV24.32 | 24 Pole | Double | 120  | 43 | 68 | 55 | M32 | 104.27 |