

ColorSave 1000V[®]

ColorSave 1000VB[®]

Advanced Single Component Volumetric Feeders



 **LIAD**
An AMPACET Company

Innovation
In Every Dose

ColorSave 1000V / ColorSave 1000VB

ColorSave 1000V / ColorSave 1000VB are advanced volumetric feeders with gravimetric capabilities - providing manufacturers a highly accurate and cost-effective alternative to gravimetric feeders.

ColorSave 1000V / ColorSave 1000VB correlate rotation speed and time with additive feed rate, improving the production process.

- Increased production efficiency, with greater cost-savings
- Automatic adaption to changed parameters and feedrate
- Records additive approximated cumulative consumption
- Optional Venturi loader with level sensor

ColorSave 1000V / ColorSave 1000VB Applications:

App. Version	Injection Molding	Extrusion	Extrusion Blow Molding
Operation Principle	Batch operation. Control of MB/additive batches.	Continuous operation. Control of MB/additive flow rate.	Continuous operation. Control of MB/additive flow rate.
Set Point	Setting of desired MB/additive percentage and shot weight.	Setting of desired MB/additive flow rate or desired percentage from extruder throughput.	Setting of desired MB/additive percentage and product weight.
Input Signal	Dry contact input for synchronization with plasticization cycle. Optional with injection cycle applicable in ColorSave 1000V only.	Dry contact input for synchronization with extruder on/off operation. 24V digital tachometer. Analog input 0-10V applicable in ColorSave 1000V only.	Dry contact input for synchronization with extruder on/off operation. Dry contact input from blowing machine for synchronization with blow cycle.
Data Recording	Accumulated MB/additive consumed and number of cycles.	Accumulated MB/additive consumed.	Accumulated MB/additive consumed and number of cycles.
Communication	Optional TCP/IP in ColorSave 1000V.	Optional TCP/IP in ColorSave 1000V.	Optional TCP/IP in ColorSave 1000V.

ColorSave 1000V / ColorSave 1000VB Specifications:

Model	ColorSave 1000V	ColorSave 1000VB
Power	100-240V, 200W, 50/60hz	
Hopper capacity	6/12/20 liter	
Output range	0.02-200 kg/h	
Motor	Powerful step motor	
Injection – Input signal	Dry contact input for synchronization with plasticization cycle	
Injection – Optional injection pulse	Yes	No
Extrusion – Input signal	Dry contact input for synchronization with extruder on/off operation	
Extrusion – Synchronization	Analog input 0-10V or 24V digital tachometer	24V digital tachometer
Recipes	Yes	No
Optional Modbus TCP/IP communication	Yes	No
Display	4.3" color touch screen	LCD with numeric keypad
Loader	Optional automatic venturi vacuum loader with sensor	
Weight	14 kg (feeder) / 5 kg (controller)	
Alarm output	N/O or N/C dry contact 0V, optional 24V/30mA max.	
Mounting and feeding	By neckpiece adapter, directly into the machine throat	



Neckpiece

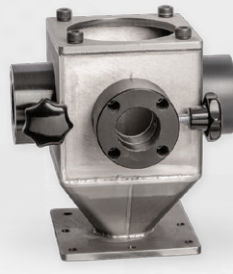
ColorSave 1000V / ColorSave 1000VB include a standard neckpiece as per volume of hopper.
Other types of neckpieces also available on request:



Hexagonal Neckpiece



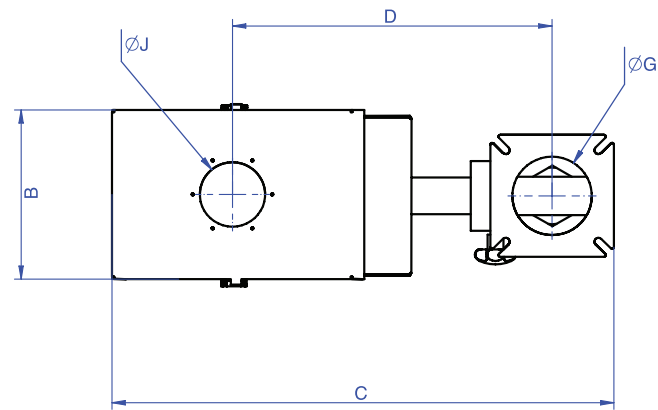
Cooled Neckpiece



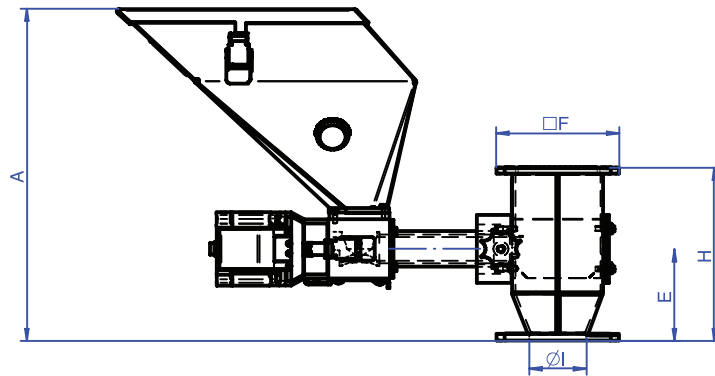
Triple Neckpiece



Round Neckpiece



Dim (mm)	6Lt	12Lt	20Lt
A	385	455	520
B	194	310	285
C	570	620	763
D	362	419	514
E	106	106	95
F	140	140	210
G	90	90	128
H	200	200	200
I	40-65	40-65	70-128
J	74	74	74



Tel: +972-4-9028800 • Fax: +972-4-9028818 • e-mail: prod@liad.co.il
POB 10, Sky St., Misgav Industrial Park 2017400 Israel

www.liad.co.il

