



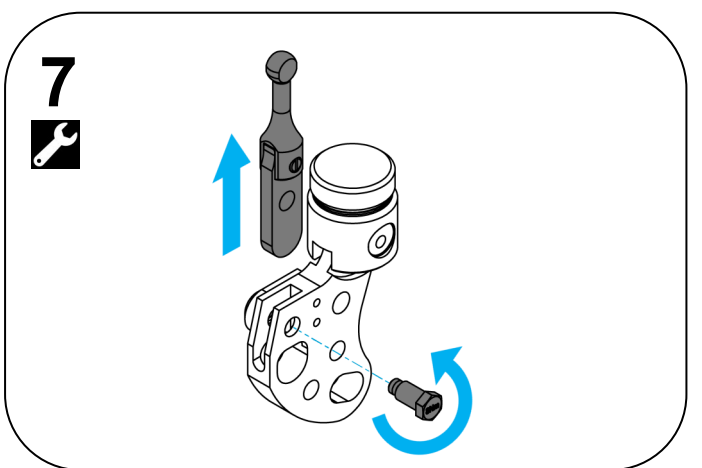
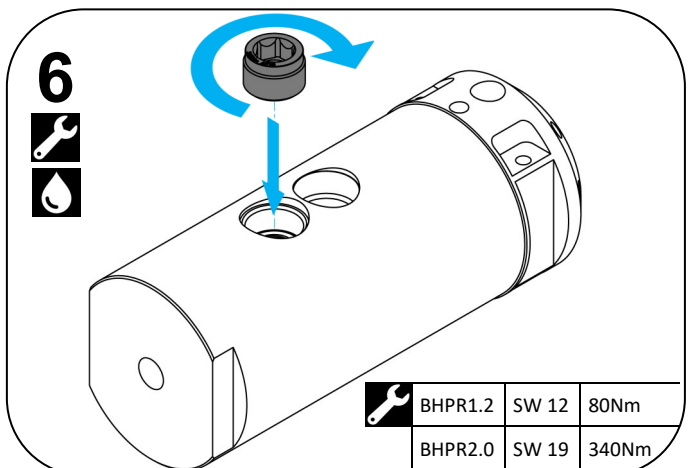
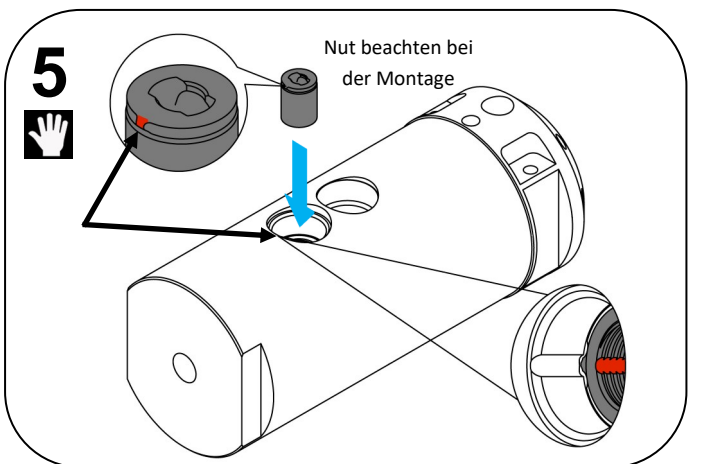
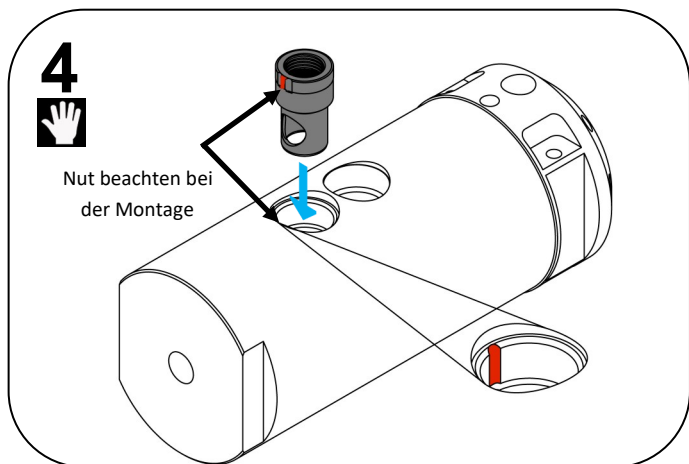
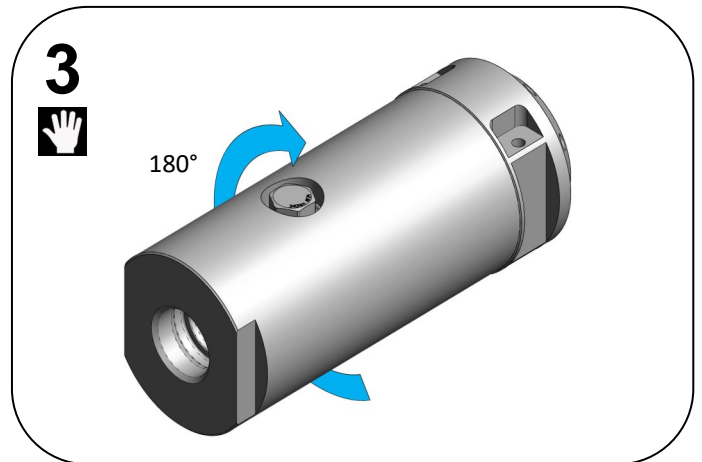
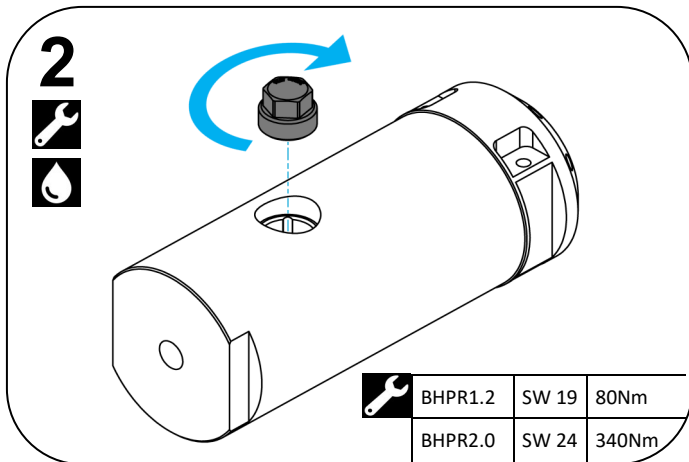
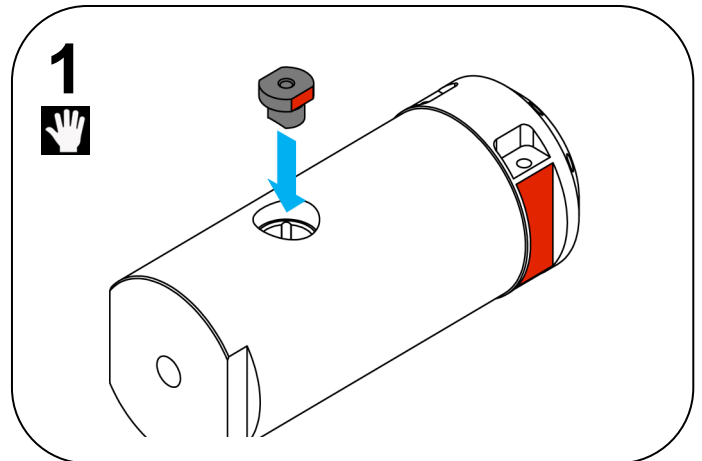
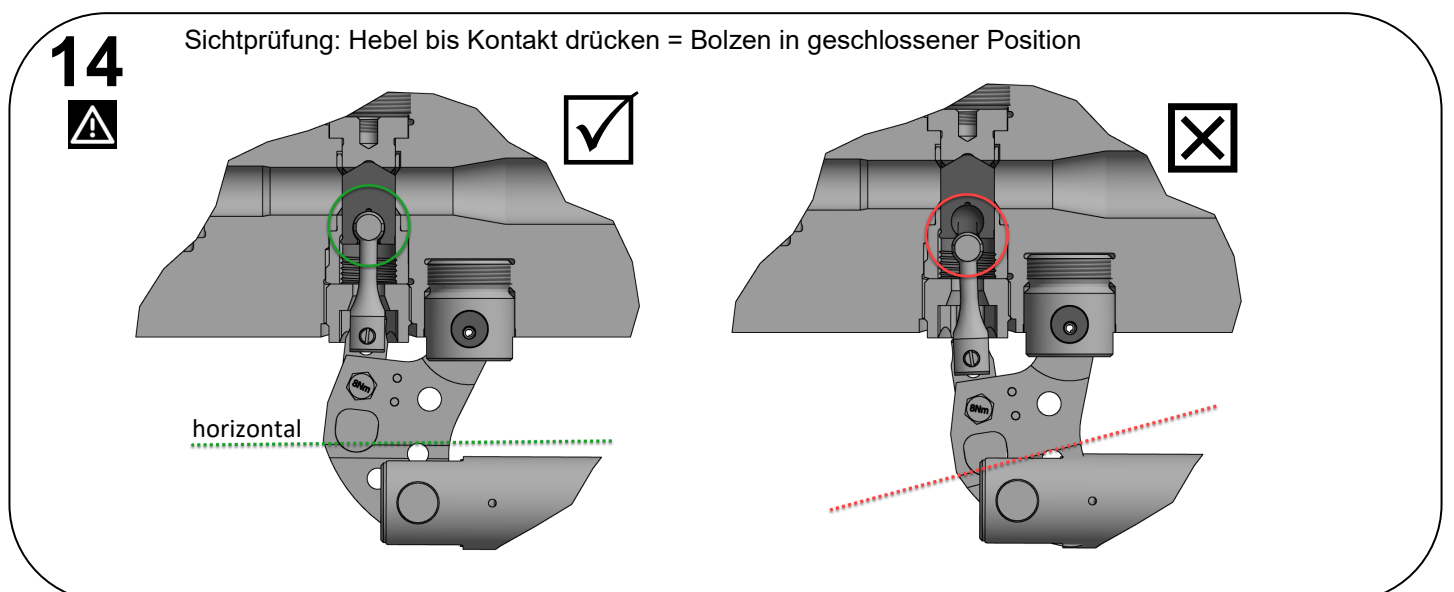
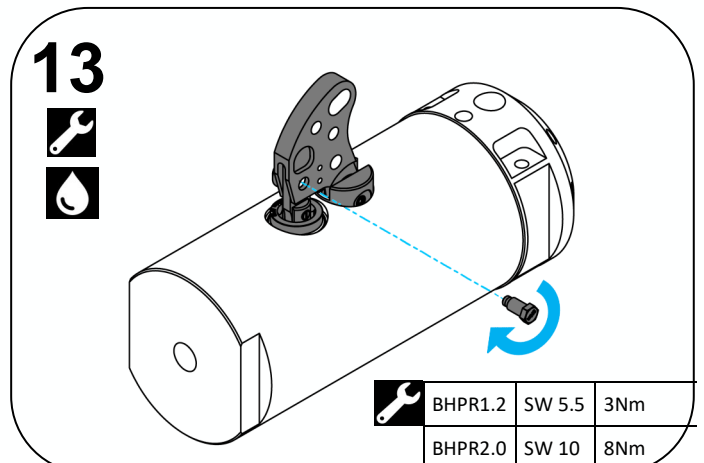
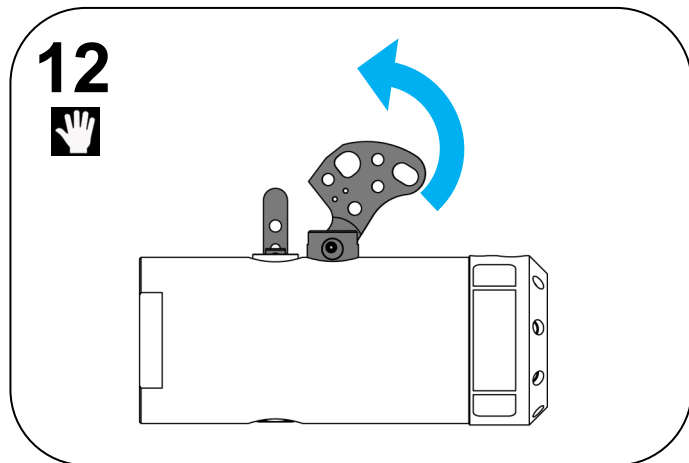
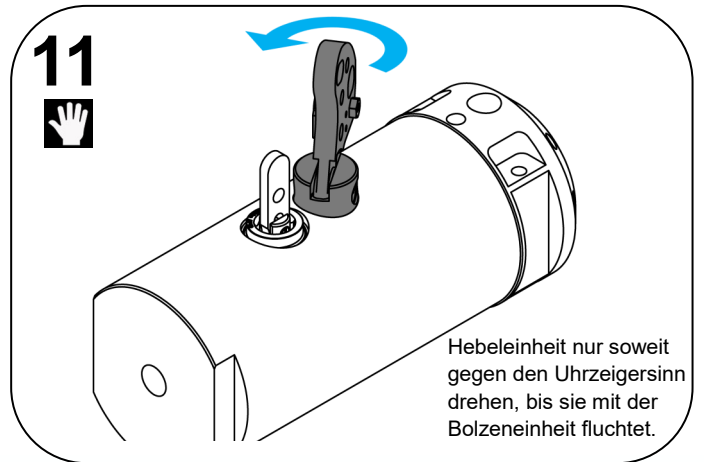
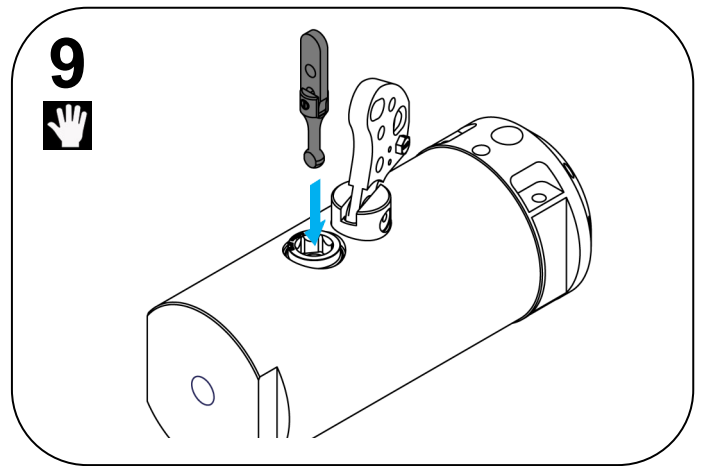
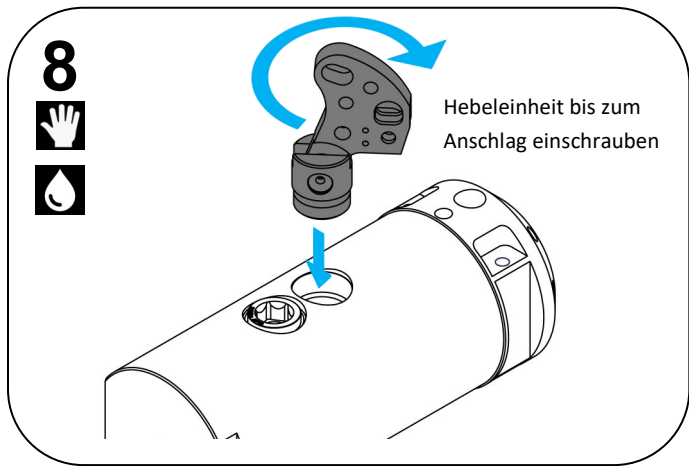


Diese Anleitung zeigt die Montageschritte des Bolzenrückzugverschlusses.
Anweisungen zur Installation der Düse finden Sie in der BHPR-Düseninstallationsanleitung.

Legende

-  Werkzeug verwenden
-  Alle Gewinde mit Hochtemperaturfett einschmieren
-  Von Hand montieren
-  Achtung







herzog systems ag

Feldhofstrasse 65
CH-9230 Flawil, Switzerland

Tel. +41 71 394 19 69
Fax.+41 71 394 19 60

www.herzogsystemsag.com
sales@herzogsystemsag.com



Herzog (China) Co. , Ltd

Lane 68 Fenglin Road
PR China, 315822 Ningbo

Tel. +86 574 8696 3001 605
Fax.+86 574 8696 3002

www.herzogsystemsag.com
asia@herzogsystemsag.com



Herzog Injection Technology, Inc.

PO Box 384, Essex
MA 01929, USA

Tel. +1 978 768 0090
Fax.+1 978 768 0094

www.herzogsystemsag.com
usa@herzogsystemsag.com



Herzog Japan

Mr. Naoto Kambara
Taihei Tehno Service Co, Ltd (TTS)
242-00001 Japan

Tel. +81 46 240 6216
Fax. +81 46 240 6217

www.herzogsystemsag.com
japan@herzogsystemsag.com