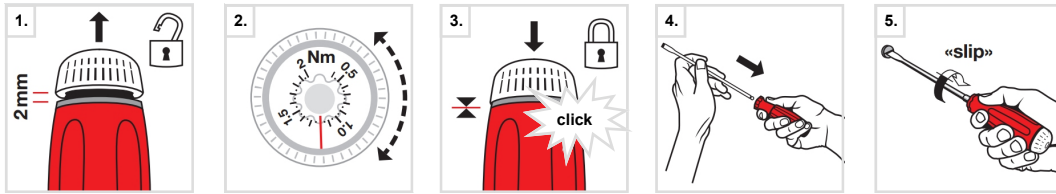


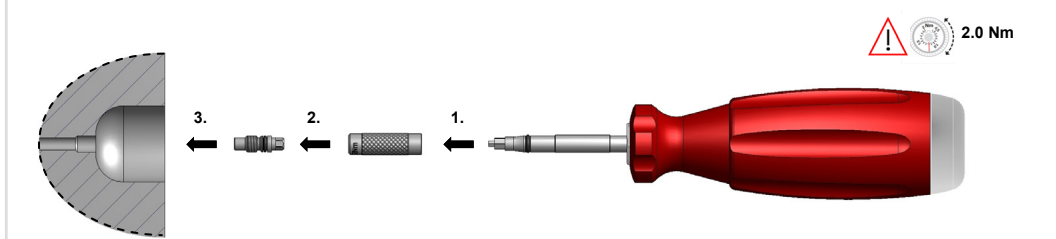
Instructions - Injector Service Set / Anleitung - Injektor Serviceset



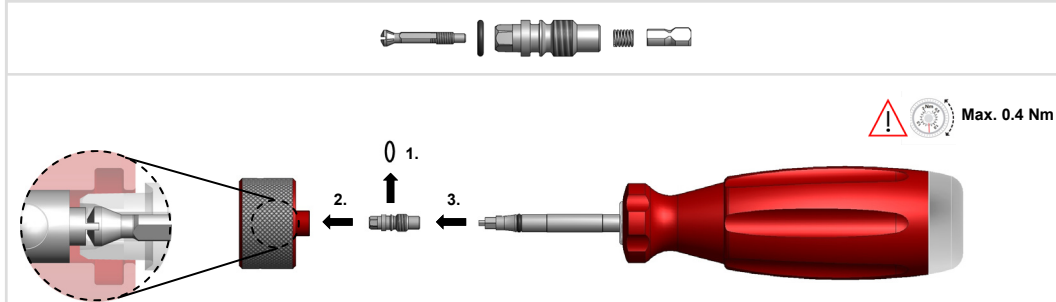
Adjust torque wrench / Drehmomentschlüssel Einstellen



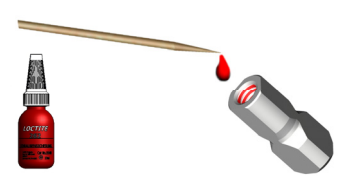
Injector - Mold installation / Injektor - Werkzeugmontage



GK(R) - Assembly, disassembly / Zusammenbau, Zerlegen



- Note / Hinweis:**
- Disassemble at 80°C / Zerlegen bei 80°C
 - Apply LITTLE glue / WENIG Klebstoff verwenden



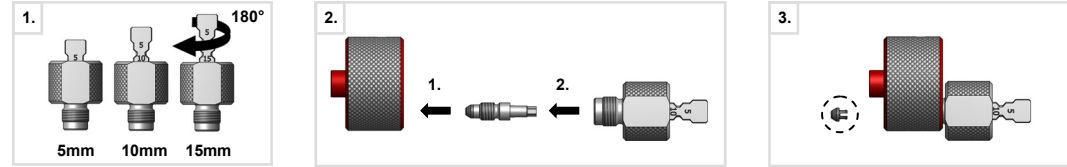
Injector type & identification / Injektor Typ & Identifikation

Immersion depth / Eintauchtiefe	GK(R), M6	GB, M6	GB, M4x0.5
5mm			
10mm			
15mm			

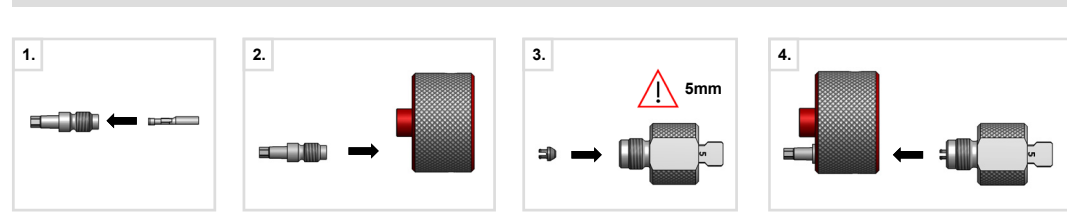
GB - Disassembly / Zerlegen



! Set to injector depth
Auf Injektortiefe einstellen



GB - Assembly / Zusammenbau



Clean casing / Gehäuse Reinigen

